

National Pollutant Inventory (NPI) Reporting

What is the NPI?

The National Pollutant Inventory (NPI) is an inventory of emissions of specified pollutants that gives information on the types and amounts of pollutants being emitted to the Australian environment. The NPI contains emission data on 90 substances. The substances included in the NPI have been identified as important because of their possible health and environmental effects.

Industrial facilities estimate their own emissions annually and report to their respective State or Territory environmental authority.

Non-industry (or diffuse) sources are estimated by state and territory governments.

Industry, governments and the community have access to the information reported to the NPI.

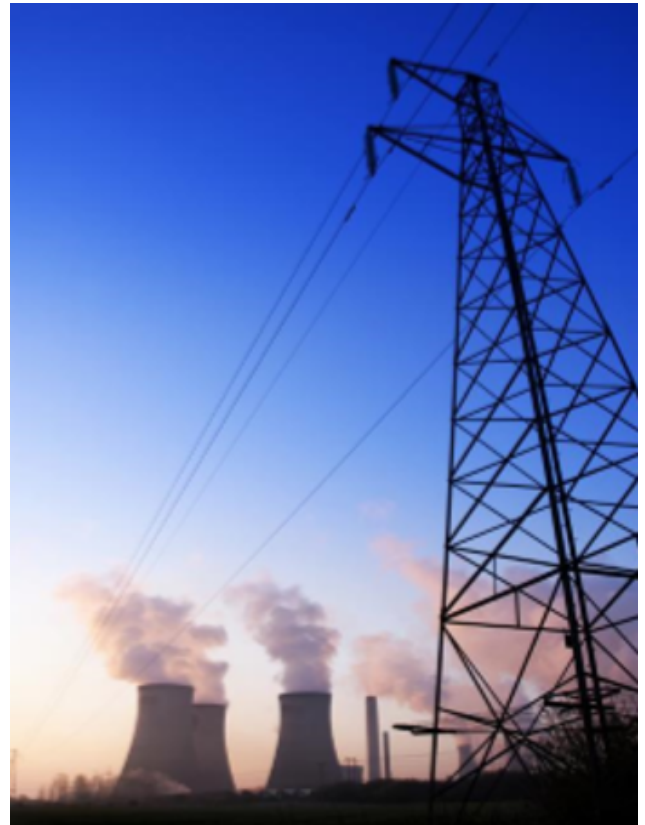
The legal basis of the NPI is a National Environment Protection February, 1998.

See www.npi.gov.au for additional information.

Does my business need to report to the NPI?

If your facility triggers any of the following reporting threshold levels, your business will be required to report your emissions to the NPI.

- Your facility uses 10 tonnes or more of any of the NPI Category 1 substances or 25 tonnes or more of the Category 1a substance; OR
- Your facility burns 400 tonnes or more of fuel or consume 60 000 megawatts or more of electric power each year; OR
- Your facility burns 1 tonne or more of fuel or waste in an hour at any time during the year; OR
- Your facility emits 15 tonnes or more of total nitrogen or 3 tonnes or more of total phosphorus to water each year, excluding emissions to ground water or sewer



HRL Technology Group Pty Ltd
ABN 89 609 887 327
info@hrl.com.au
hrl.com.au

Melbourne
Level One Unit 4
677 Springvale Road
Mulgrave VIC 3170
Phone +613 9565 9888
Fax +613 9565 9879

Regional Victorian Office
Gippsland Enterprise Centre
50 Northways Road
Churchill VIC 3842
Phone +61 3 5132 1500
Fax +61 3 5132 1580

Queensland
Unit 2
33-37 Rosedale Street
Coopers Plains QLD 4108
Phone +61 7 3423 4300
Fax +61 7 3345 5937

What does it mean for business?

Facilities that trigger the threshold level for a substance must report their emissions of that substance each year.

How can HRL help?

HRL has been closely involved in the development of the NPI. Our team can assist industry through:

- Advice on NPI requirements. Review of handbooks for different industries and emission estimation techniques.
- Ongoing updates on implementation of the NPI to ensure requirements are met efficiently and cost-effectively.
- Introducing the NPI and its implications to staff. Streamlining the reporting process.
- Assessing available data on reportable substances. Selection of emission estimation techniques. Recommendations to fill knowledge gaps.
- Assistance with completion of annual NPI reports.
- Development of simple reporting tools to streamline the completion of NPI reports.
- Development of emission factors through mass balance analysis or by stack sampling.

Contact

Glenn Innes

Telephone +61 3 9565 9932

Mobile +61 439 100 704

Email ginnes@hrl.com.au

Need more information? Go to hrl.com.au

The company's NATA Accredited Laboratories number is 561.

HRL Technology Group's ISO 9001 Quality Management is certified by BSI under certificate FS605116

© 2019 HRL Technology Group Pty Ltd